

ITCertMagic

ITCertMagic

HOME

ALL VENDORS

★ GUARANTEE

? FAQ

TESTIMONIALS

CART (0)



Try **PDF Demo** before you buy

28 Top Certifications

Apr

- ▶ HP CSE ▶ Avaya Specialist
- ▶ ACE InDesign ▶ LPIC Level1
- ▶ Apple Certified Pro ▶ VCP6-CMA
- ▶ JNCDA ▶ Aruba Certification ▶ CCA XP
- ▶ ICND1 ▶ RCSP ▶ GAQM LCP
- ▶ JNCDS-SEC ▶ Fireware Essentials
- ▶ Oracle Spatial 11g

28 Top Vendors

Apr

- ▶ ISM ▶ HRCI
- ▶ Palo Alto Networks ▶ NSCA
- ▶ SUN ▶ ISQI ▶ Huawei
- ▶ American College ▶ IIA ▶ ARM
- ▶ Pegasystems ▶ OMG ▶ Simens ▶ GRE
- ▶ HAAD ▶ PCI ▶ BBPSD ▶ SCO
- ▶ SugarCRM ▶ Logical Operations ▶ IIBA
- ▶ Altiris ▶ Alfresco ▶ AMA ▶ Informatca

What Client's Say

“ There are some less than 8 new questions, so this 70-695 dump is still mostly valid. Wrote the exams today and passed. ”

Timothy ★★★★★

<http://www.itcertmagic.com/>

Pass-Guaranteed Certification Exam Questions | Exam Dumps - ITCertMagic

Exam : **70-494**

Title : Recertification for MCSD: Web Applications

Vendor : Microsoft

Version : DEMO

NO.1 You need to choose the appropriate data access technology for the children's book area of the web application.

Which data access technology should you choose?

- A. Web Service
- B. LINQ to SQL
- C. ADO.NET Entity Framework
- D. WCF Data Services

Answer: C

NO.2 DRAG DROP

You are supporting a WCF data contract that returns a price calculation that can be expanded to add new data members.

Clients using the old version of the data contract must be supported.

You need to define the data contract so that the data serializer can put unknown data members into a property bag.

You have the following code:

```
[DataContract]
public class PriceCalculationResponse : Target 1
{
    public Target 2 ExtensionData { get; set; }
    [DataMember]
    public int Flag { get; set; }
    [DataMember]
    public double Price { get; set; }
    [DataMember]
    public string Currency { get; set; }
}
```

Which code segments should you include in Target 1 and Target 2 to complete the data contract? (To answer, drag the appropriate code elements to the correct targets in the answer area. Each code element may be used once, more than once, or not at all. You may need to drag the split bar between panes or scroll to view content.)

Code Elements

- ExpansionDataObject
- IExtensibleDataObject
- IExpansionDataObject
- ExtensionDataObject
- ExtensionData
- IExtensionDataObject

Answer Area

Target 1: Code Element

Target 2: Code Element

Answer:

Code Elements

- ExpansionDataObject
- IExtensibleDataObject
- IExpansionDataObject
- ExtensionDataObject
- ExtensionData
- IExtensionDataObject

Answer Area

Target 1: IExtensibleDataObject

Target 2: ExtensionDataObject

NO.3 DRAG DROP

You are developing a WCF service.

You need to implement transport security by using NTLM authentication and NetTcpBindings.

Which configuration values should you use? (To answer, drag the appropriate configuration values to the correct location or locations in the answer area. Each configuration value may be used once, more than once, or not at all. You may need to drag the split bar between panes or scroll to view content.)

Answer Area	
binding="netTcpBinding"	<system.serviceModel>
binding="Duplex"	<protocolMapping>
binding="NtlmTcp"	<add scheme="https" />
mode="netBindingTcp"	</protocolMapping>
mode="Transport"	<bindings>
mode="Duplex"	<wsHttpBinding>
clientCredentialType="netTcpBinding"	<binding>
clientCredentialType="NtlmTcp"	<security >
clientCredentialType="Ntlm"	<transport />
	</security>
	</binding>
	</wsHttpBinding>
	</bindings>
	</system.serviceModel>

Answer:

Answer Area	
binding="netTcpBinding"	<system.serviceModel>
binding="Duplex"	<protocolMapping>
binding="NtlmTcp"	<add scheme="https" binding="netTcpBinding" />
mode="netBindingTcp"	</protocolMapping>
mode="Transport"	<bindings>
mode="Duplex"	<wsHttpBinding>
clientCredentialType="netTcpBinding"	<binding mode="Transport" >
clientCredentialType="NtlmTcp"	<transport clientCredentialType="Ntlm" />
clientCredentialType="Ntlm"	</security>
	</binding>
	</wsHttpBinding>
	</bindings>
	</system.serviceModel>

NO.4 You are developing an ASP.NET MVC application by using Visual Studio 2012.

The application throws and handles exceptions when it runs.

You need to examine the state of the application when exceptions are thrown.

What should you do?

- From the Debug menu in Visual Studio 2012, select Exceptions. Enable the Thrown check box for Common Language Runtime Exceptions.
- From the DEBUG menu in Visual Studio 2012, select Attach to Process. Select the IIS process.
- From the Debug menu in Visual Studio 2012, select Exceptions. Disable the Userunhandled check box for Common Language Runtime Exceptions.
- From the TOOLS menu in Visual Studio 2012, click Customize. Click the Commands tab and select Debug.

Answer: A

NO.5 You develop an ASP.NET MVC application that is secured by using SSL. You are ready to deploy the application to production.

The deployment package must include the installation of the SSL certificate.

You need to configure the deployment package to meet the requirement.

What should you do?

- A. Create a web publish pipeline target file with a custom web deploy target.
- B. In the Package/Publish settings of the project, select the All Files in this project option.
- C. Extend the CopyAllFilesToSingleFolder target in the project file.
- D. In the Build Events settings of the project, configure a pre-build event to include the SSL certificate

Answer: A

NO.6 DRAG DROP

You are developing a .NET application that uses the HttpClient type to access an ASP.NET Web API application.

You need to add a header to specify that data is returned as JSON. You have the following code:

```
HttpClient client = new HttpClient () ;
Client.DefaultRequestHeaders.
    Add("Target 1", "Target 2");
```

Which code segments should you include in Target 1 and Target 2 to complete the code? (To answer, drag the appropriate code segments to the correct targets in the answer area. Each code segment may be used once, more than once, or not at all. You may need to drag the split bar between panes or scroll to view content)

The screenshot shows a drag-and-drop interface. On the left, under the heading "Code Segments", there is a list of code segments in a scrollable container: `ContentType`, `Accept`, `AcceptEncoding`, `application/xhtml+xml`, `application/xml`, and `application/json`. On the right, under the heading "Answer Area", there are two target boxes labeled "Target 1:" and "Target 2:". Each target box contains a placeholder text "Code Segment".

Answer:

Code Segments	Answer Area
<input type="checkbox"/> ContentType	Target 1: <input type="text" value="Accept"/>
<input type="checkbox"/> Accept	Target 2: <input type="text" value="application/json"/>
<input type="checkbox"/> AcceptEncoding	
<input type="checkbox"/> application/xhtml+xml	
<input type="checkbox"/> application/xml	
<input type="checkbox"/> application/json	

NO.7 You are developing an ASP.NET MVC application that uses forms authentication. The application uses SQL queries that display customer order data.

You need to prevent all SQL injection attacks against the application.

How should you secure the queries?

- A. Implement parameterization.
- B. Pattern check the input.
- C. Filter out prohibited words in the input.
- D. Escape single quotes on string-based input parameters.

Answer: A

Explanation:

With most development platforms, parameterized statements that work with parameters can be used (sometimes called placeholders or bind variables) instead of embedding user input in the statement. A placeholder can only store a value of the given type and not an arbitrary SQL fragment. Hence the SQL injection would simply be treated as a strange (and probably invalid) parameter value.

Reference: https://en.wikipedia.org/wiki/SQL_injection#Parameterized_statements

NO.8 You need to update the ImportBooks() method to use database transactions. Which code segment should you use?

- A. SqlConnection.BeginTransaction(IsolationLevel.RepeatableRead);
- B. SqlConnection.BeginTransaction(IsolationLevel.ReadUncommitted);
- C. SqlConnection.BeginTransaction(IsolationLevel.Serializable);
- D. SqlConnection.BeginTransaction(IsolationLevel.Snapshot);

Answer: B

Explanation:

* scenario: The ImportBooks() method must keep a copy of the data that can be accessed while new books are being imported without blocking reads.

* ReadUncommitted A dirty read is possible, meaning that no shared locks are issued and no exclusive locks are honored.

NO.9 You need to choose the appropriate data access technology for the cookbook area of the web application.

Which data access technology should you choose?

- A. WCF Data Services
- B. LINQ to SQL
- C. Entity Framework
- D. ADO.NET

Answer: A

Explanation:

* Scenario: The cookbook functionality is contained within a client-side application that must connect to the server using HTTP and requires access to the data using JavaScript.

*WCF Data Services (formerly known as "ADO.NET Data Services") is a component of the .NET Framework that enables you to create services that use the Open Data Protocol (OData) to expose and consume data over the Web or intranet by using the semantics of representational state transfer (REST). OData exposes data as resources that are addressable by URIs. Data is accessed and changed by using standard HTTP verbs of GET, PUT, POST, and DELETE

*WCF Data Services uses the OData protocol for addressing and updating resources. In this way, you can access these services from any client that supports OData. OData enables you to request and write data to resources by using well-known transfer formats: Atom, a set of standards for exchanging and updating data as XML, and JavaScript Object Notation (JSON), a text-based data exchange format used extensively in AJAX application.

NO.10 You need to recommend a data access technology to the contractor to retrieve data from the new data source.

Which data access technology should you recommend?

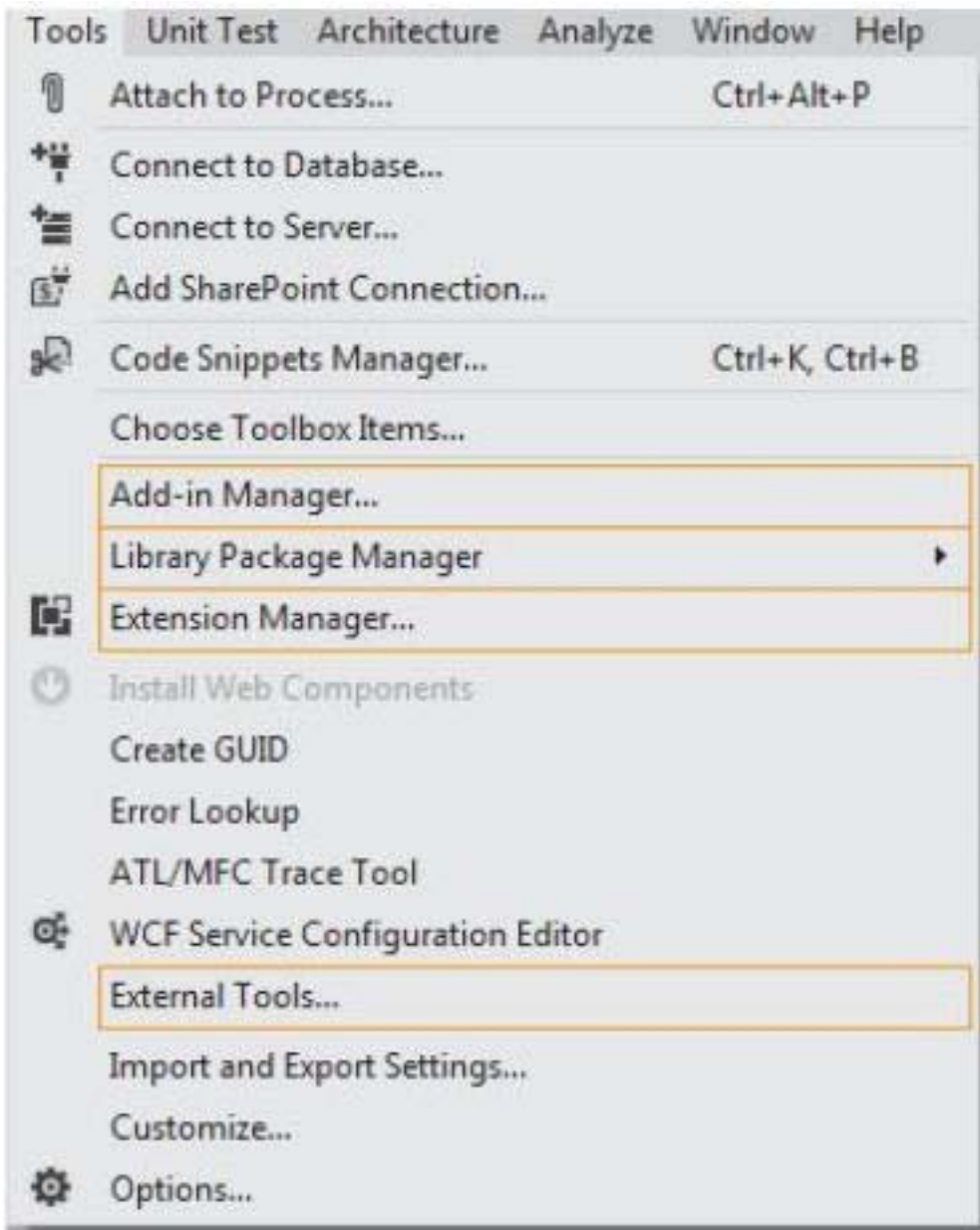
- A. LINQ to XML
- B. ADO.NET Entity Framework
- C. ADO.NET DataSets
- D. WCF Data Services

Answer: D

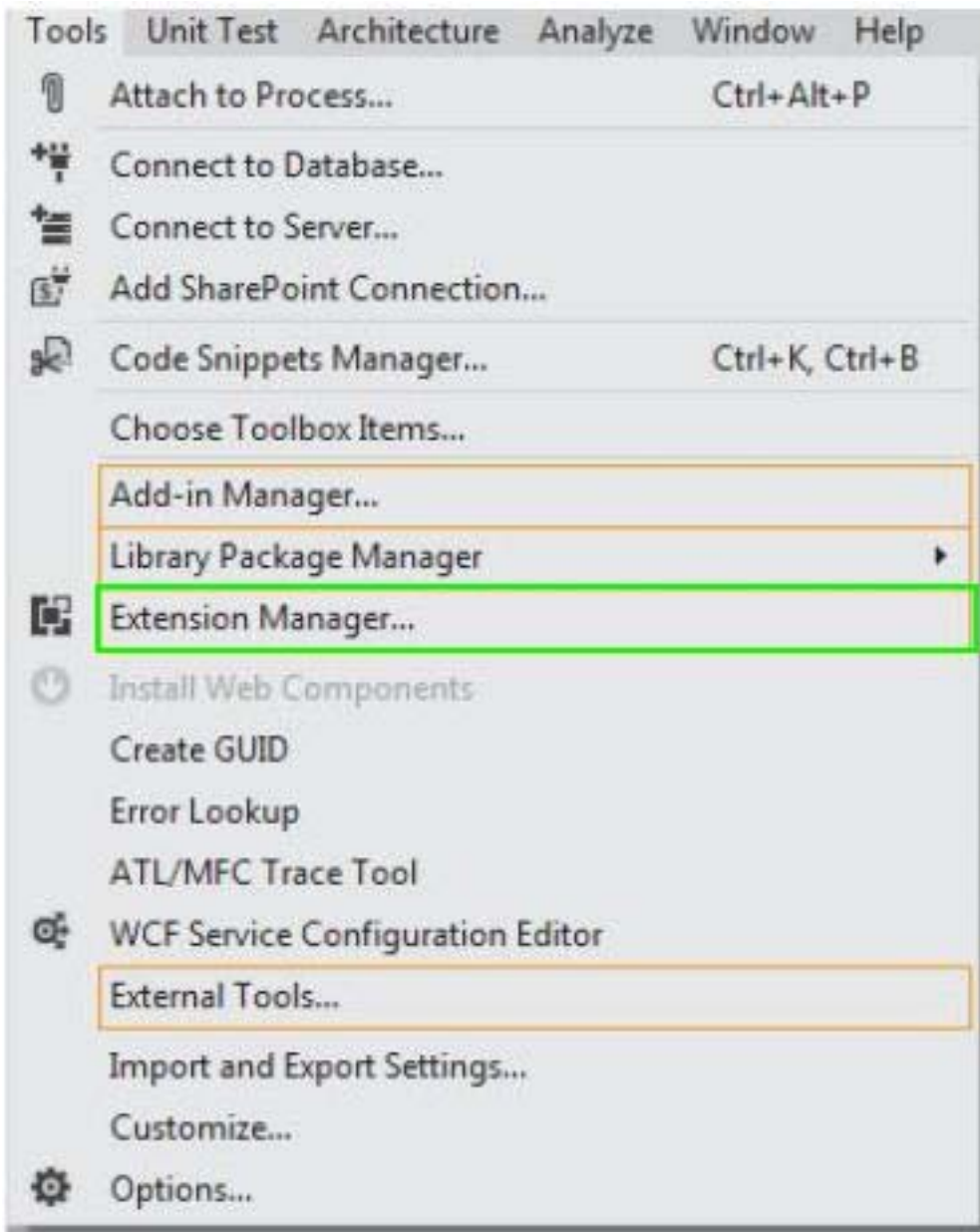
NO.11 HOTSPOT

You are supporting an application that uses the ADO.NET Entity Framework to query and access data. The latest version of Entity Framework contains bug fixes that will improve performance. You need to update Entity Framework.

Which Visual Studio 2012 menu item should you choose? (To answer, select the appropriate menu item in the answer area.)



Answer:



NO.12 DRAG DROP

You are developing an ASP.NET MVC Web API image management application.

The application must meet the following requirements:

- It must send or receive image data without the use of a buffer.
- It must allow up to 4 MB of image data to be received.
- It must allow up to 3 MB of image data to be sent.

You need to complete the code to meet the requirements.

What should you do? (To answer, drag the appropriate code segments to the correct location or locations in the answer area. Each code segment may be used once, more than once, or not at all. You may need to drag the split bar between panes or scroll to view content.)

Answer Area

```

class Program
{
    private static string _baseAddress = "http://localhost:8080/";

    static void Main(string[] args)
    {
        var config = new HttpSelfHostConfiguration(_baseAddress);
        config.Routes.MapHttpRoute(
            name: "DefaultApi",
            routeTemplate: "api/{controller}/{id}",
            defaults: new { id = RouteParameter.Optional }
        );

        _____ . _____ = 1024 * 1024 * 3;

        _____ . _____ = 1024 * 1024 * 4;

        _____ .TransferMode =

        TransferMode. _____ ;

        var server = new HttpSelfHostServer(config);
        server.OpenAsync().Wait();
    }
}

```

config
server
MaxBufferSize
MaxReceivedMessageSize
MaxConcurrentRequests
Streamed
Buffered

Answer:

Answer Area

```

class Program
{
    private static string _baseAddress = "http://localhost:8080/";

    static void Main(string[] args)
    {
        var config = new HttpSelfHostConfiguration(_baseAddress);
        config.Routes.MapHttpRoute(
            name: "DefaultApi",
            routeTemplate: "api/{controller}/{id}",
            defaults: new { id = RouteParameter.Optional }
        );

        config . MaxBufferSize = 1024 * 1024 * 3;

        config . MaxReceivedMessageSize = 1024 * 1024 * 4;

        config .TransferMode =

        TransferMode. Streamed ;

        var server = new HttpSelfHostServer(config);
        server.OpenAsync().Wait();
    }
}

```

config
server
MaxBufferSize
MaxReceivedMessageSize
MaxConcurrentRequests
Streamed
Buffered

NO.13 DRAG DROP

You are developing an ASP.NET Web API action method.

The action method must return the following JSON in the message body.

```
{ "Name": "Fabrikam", "VendorId" :9823, "Items": ["Dogs", "Cats"] }
```

You need to return an anonymous object that is serialized to JSON.

What should you do? (To answer, drag the appropriate code segments to the correct location or

locations in the answer area. Each code segment may be used once, more than once, or not at all. You may need to drag the split bar between panes or scroll to view content.)

Answer:

NO.14 You are developing an ASP.NET MVC application that supports multiple cultures and multiple languages. The application will be sold to international customers.

The ASP.NET MVC application must store localized content in satellite assemblies for multiple languages.

You need to generate the satellite assemblies during an automated build.

Which tool should you use?

- A. Gacutil.exe
- B. Al.exe
- C. Ildasm.exe
- D. nasm.exe

Answer: B

Explanation:

Use the Assembly Linker (Al.exe) to compile .resources files into satellite assemblies. Al.exe creates an assembly from the .resources files that you specify. By definition, satellite assemblies can only contain resources. They cannot contain any executable code.

The following Al.exe command creates a satellite assembly for the application MyApp from the file strings.de.resources. al /t:lib /embed:strings.de.resources /culture:de /out:MyApp.resources.dll

NO.15 If the canvas element is supported by the client browser, the application must display "London 2012" in the footer as text formatted by JavaScript at the end of the _Layout.cshtml file.

You need to modify the layout to ensure that "London 2012" is displayed as either formatted text or as plain text, depending on what the client browser supports.

Which code segment should you add?

- A. `<canvas id="myFooter">
@(Request.Browser.JavaApplets ? new HtmlString("London 2012") : null)
</canvas>`
- B. `<canvas id="myFooter">London 2012</canvas>`
- C. `<canvas id="myCanvas">London 2012</canvas>`
- D. `<canvas id="myCanvas"></canvas>
<p>London 2012</p>`

Answer: C

NO.16 You are developing an ASP.NET MVC application in Visual Studio 2012. The application supports multiple cultures.

The application contains three resource files in the Resources directory:

- ProductDictionary.resx
- ProductDictionary.es.resx
- ProductDictionary.fr.resx

Each file contains a public resource named Currency with the localized currency symbol. The application is configured to set the culture based on the client browser settings.

The application contains a controller with the action defined in the following code segment. (Line numbers are included for reference only.)

```
01 public ActionResult GetProducts()  
02 {  
03  
04     List<ProductModel> products = DataBase.DBAccess.GetProducts();  
05     return View(products);  
06 }
```

You need to set ViewBag.LocalizedCurrency to the localized currency contained in the resource files.

Which code segment should you add to the action at line 03?

- A. `ViewBag.LocalizedCurrency = Resources.ProductDictionary.Currency;`
- B. `ViewBag.LocalizedCurrency = HttpContext.GetGlobalResourceObject("ProductDictionary", "Currency", new System.Globalization.CultureInfo(Men));`
- C. `ViewBag.LocalizedCurrency = HttpContext.GetLocalResourceObject("ProductDictionary", "Currency");`
- D. `ViewBag.LocalizedCurrency = HttpContext.GetGlobalResourceObject("ProductDictionary", "Currency");`

Answer: A